

The QuickTrace μ Encoder offers a smart solution to perform one hand encoded manual phased array scan. It's world's first quick-snap position encoder, making it simple to use on the field. The QuickTrace can snap onto Detachable Active Array Heads (DAAH) and will provide position signals to most common instruments. The QuickTrace μ Encoder will outlive any optical encoder. Unlike these, the QuickTrace μ Encoder is not afraid of sand, dust or water! The precision you need, wherever and whenever you need it.

QuickTrace μ Encoder

linear position encoding for DAAH probes

Advantages of the QuickTrace μ Encoder

The QuickTrace concept solves most of the issues with manual position encoding phased array probes.

- Provides position information in ultrasound views like B/C-scan.
- Very quick installation of the encoder on the probe, thanks to the snap-on clip.
- Ergonomical design that fits naturally in hand without obstruction.
- Easiness of movement on inspected components because the wheel and encoder weight are perfectly aligned with the S-scan azimuthal axis. No sticky effect or annoying drifting.
- User can install either rubber tire or magnetic wheel.
- No slipping thanks to the adjustable spring-loaded mechanism.
- Clip can be positioned with $\pm 60^\circ$ skew



Main Features:

- Cost effective
- Quick snap-on design (no tool required)
- Lightweight
- Hi-resolution (14 ticks/mm)
- IP67 protection against fine dust and water immersion
- Rugged anodized aluminum casing
- Adjustable spring load
- Suitable for HARFANG's X-32 and all major instruments

Applications:

- Welds
- Flanges and nozzles
- Piping
- Wherever position encoding is required

QUICKTRACE PRODUCT SPECIFICATIONS

GENERAL

Family	Type 1 DAAH Clip
Casing material	Anodized aluminum
Resolution	14 ticks/mm
Spring torque	0.75 lbs
Cable length	2.0 m
Operation Temperature	-20°C to 85°C
Warranty	Limited, 1 year on parts and labor

EXTERNAL DIMENSIONS mm (in.)

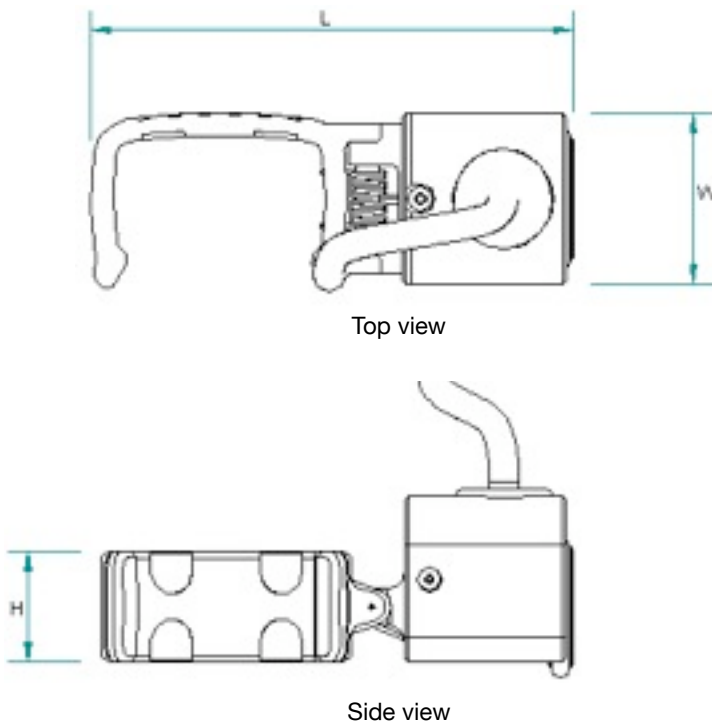
L	W	H
76.7 (3.02)	27.0 (1.06)	17.9 (0.70)

CONNECTOR

Type	HD-15
Pin 3	5V
Pin 9	Phase A
Pin 10	Phase B
Pin 15	Ground

All specifications subject to change without notice.

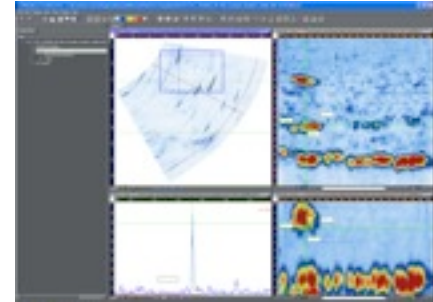
QUICKTRACE EXTERNAL DIMENSIONS



HARFANG Microtechniques Inc.

4975, rue Rideau (Suite 140) - Québec (Québec) - Canada G2E 5H5
 Tél: +1 (418) 683-6222 Fax: +1 (418) 683-7032 www.harfangmicro.com

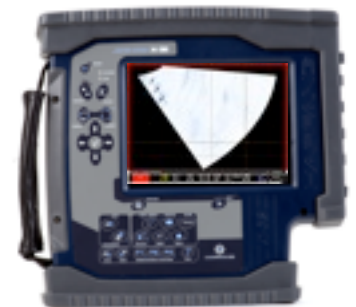
NOTES



The QuickTrace is well integrated in our **UTStudio** software.



The QuickTrace has an ergonomic design that fits naturally in hand without obstruction



The QuickTrace is suitable for HARFANG's X-32 and all major instruments.

DISTRIBUTED BY:

نماینده انحصاری در ایران
شرکت پویشیار
 تهران، خیابان آفریقا بلوار گلشهر پلاک ۱۵ طبقه دوم
 تلفن: ۲۲۰۵ ۳۸ ۴۲ فاکس: ۲۲۰۵ ۶۴ ۸۲

Patent pending